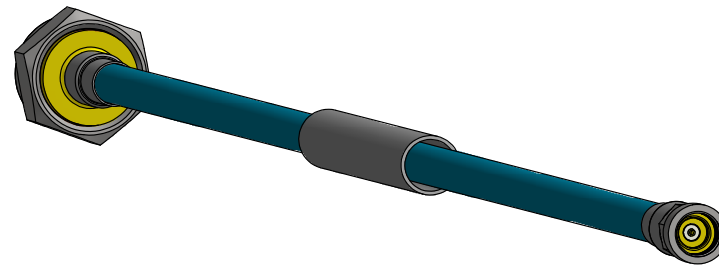
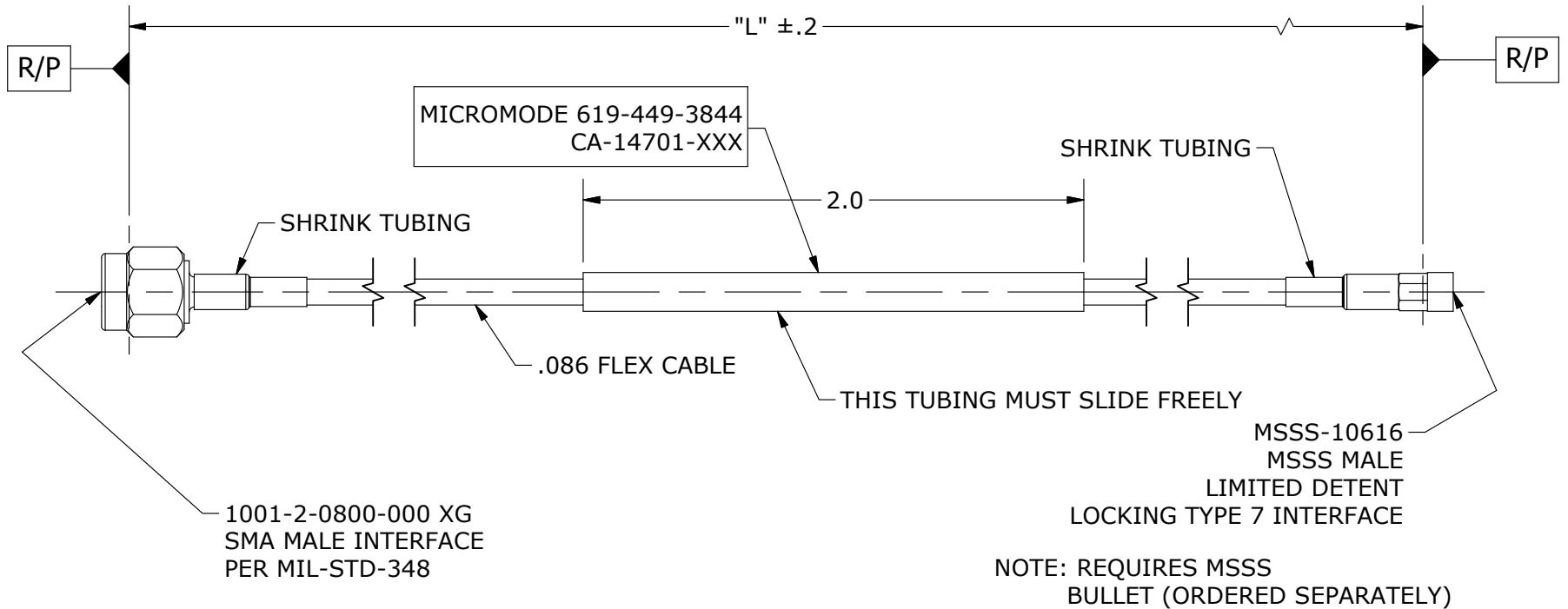


MMP CABLE CA-14701-TAB#	CABLE LENGTH "L" (INCHES)
-001	4.0
-002	6.0
-003	8.0
-004	10.0
-005	12.0



COMPONENT	MATERIAL	FINISH
SMA BODY	303 CRES, ASTM A582	GOLD PLATE, MIL-DTL-45204, TYPE 1, GRADE C, CLASS 1
MSSS BODY & CONTACTS	BeCu, ASTM B196, UNS C17300	GOLD PLATE, MIL-DTL-45204, TYPE 1, GRADE C, CLASS 1
INSULATORS	PTFE PER ASTM D1710 TYPE 1, GRADE 1, CLASS A	
COUPLING NUT	303 CRES, ASTM A582	PASSIVATE, AMS-QQ-P-35
HEATSHRINK TUBING	POLYOLEFIN MIL-DTL-23053/5, BLK OR WHT	
LOCK RING	BeCu, ASTM B197, UNS C17200	



**MICRO-MODE PRODUCTS, INC.**  
*The Reliable Connection to the Future*

El Cajon, CA 92020  
ph 619.449.3844  
www.micromode.com

CAGE CODE  
15907

ASSEMBLY PROCEDURES: N/A

TOOL: N/A

**MSSS LD LOCKING TO SMA MALE,  
.086 FLEX CABLE**

SHEET 1 OF 1    11/12/2015    SE    MT

PART NO.  
**CA-14701-TAB**

REVISION  
-