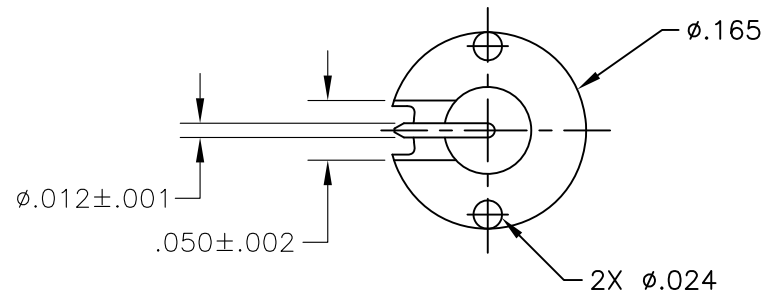
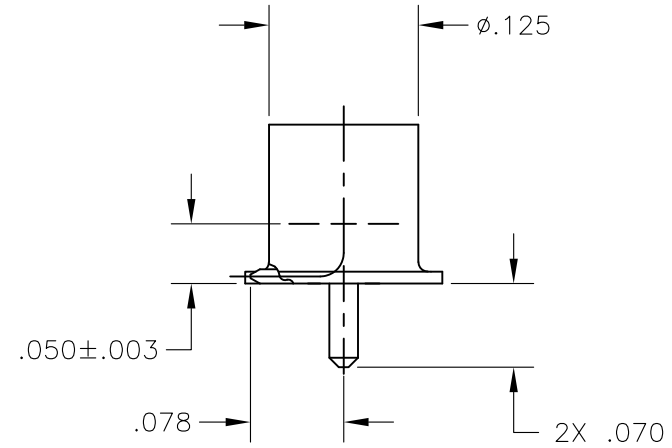
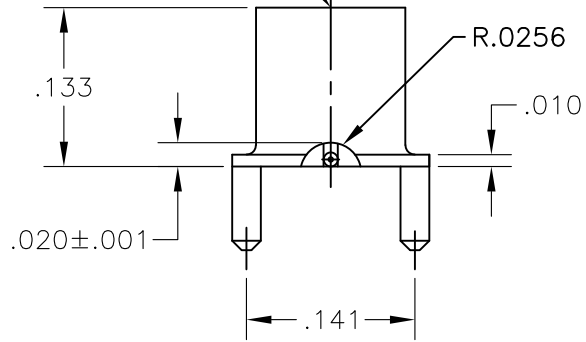


OUTLINE DRAWING

SMPM MALE
FULL DETENT
INTERFACE
PER MIL-STD-348

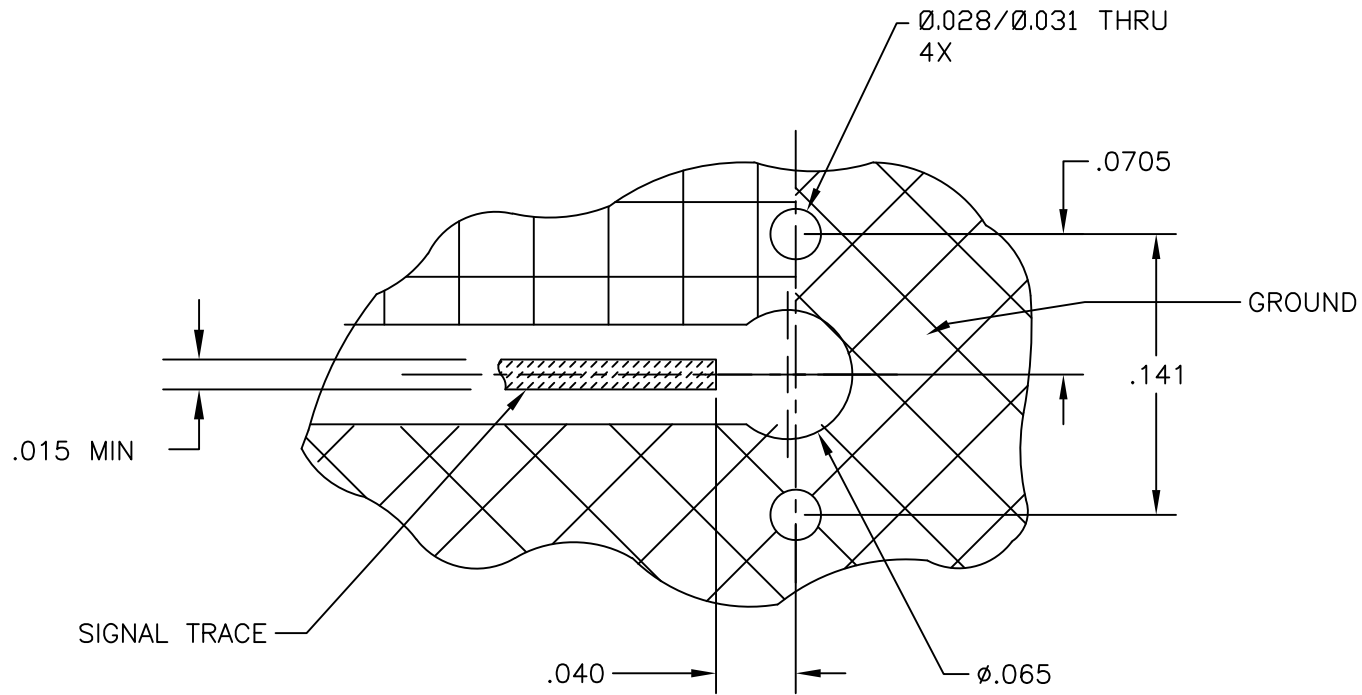


OPERATING FREQUENCY	DC TO 26.5 GHz	RF LEAKAGE	-80dB TO 3 GHz -65dB 3-26.5 GHz	FORCE TO ENGAGE	8.0 LBS MAXIMUM
VSWR	1.35:1 MAX - DC TO 26.5 GHz	IMPEDANCE	50 OHMS NOMINAL	FORCE TO DISENGAGE	3.0 LBS MINIMUM
INSERTION LOSS	0.12 √f (GHz)	CENTER/OUTER CONTACT RESISTANCE	6.0/2.0 mOHMS	DURABILITY	100 CYCLES MINIMUM
RF HIGH POT	200 Vrms MIN @ 5 MHz	OPERATING TEMPERATURE	-65°C TO +165°C	VIBRATION	MIL-STD-202, METHOD 204, CONDITION D
INSULATION RESISTANCE	5,000 MEGOHMS MINIMUM	NON-OPERATING TEMPERATURE	-65°C TO +165°C	SHOCK	MIL-STD-202, METHOD 213, CONDITION I
DWV	325 VRMS			THERMAL SHOCK	MIL-STD-202, METHOD 107, CONDITION B

COMPONENT	MATERIAL & FINISH	MICRO-MODE PRODUCTS, INC. <i>The Reliable Connection to the Future</i>	El Cajon, CA 92020 ph 619.449.3844 www.micromode.com	CAGE CODE 15907	
BODY, CONTACT	BeCu, ASTM B196, UNS C17300 GOLD PLATE, MIL-G-45204, TYPE 1, GRADE C, CLASS 1		ASSY PROCEDURES: MMAP-8399	SMPM MALE, FULL DETENT RIGHT ANGLE, PCB MOUNT	
INSULATOR	TORLON 4203, ASTM D5204	INSERTION/EXTRACTION TOOL: N/A			
		SHEET 1 OF 2	2-17-20 . MP	PART NO. MSSP-8759	REVISION A

OUTLINE DRAWING

OUTLINE DRAWING



*THESE DIMENSIONS ARE PROVIDED AS A REFERENCE. CUSTOMER APPLICATIONS MAY VARY AND REQUIRE SPECIAL FEATURES THAT ARE MATCHED TO THE LAUNCH TRANSITION.



MICRO-MODE PRODUCTS, INC.
The Reliable Connection to the Future

El Cajon, CA 92020
ph 619.449.3844
www.micromode.com

CAGE CODE
15907

ASSY PROCEDURES: N/A

INSERTION/EXTRACTION TOOL: N/A

SMPM MALE, FULL DETENT,
R/A, PCB MOUNT

PART NO.

MSSP-8759

REVISION

A

SHEET 2 OF 2

8-30-2022

MT

OUTLINE DRAWING