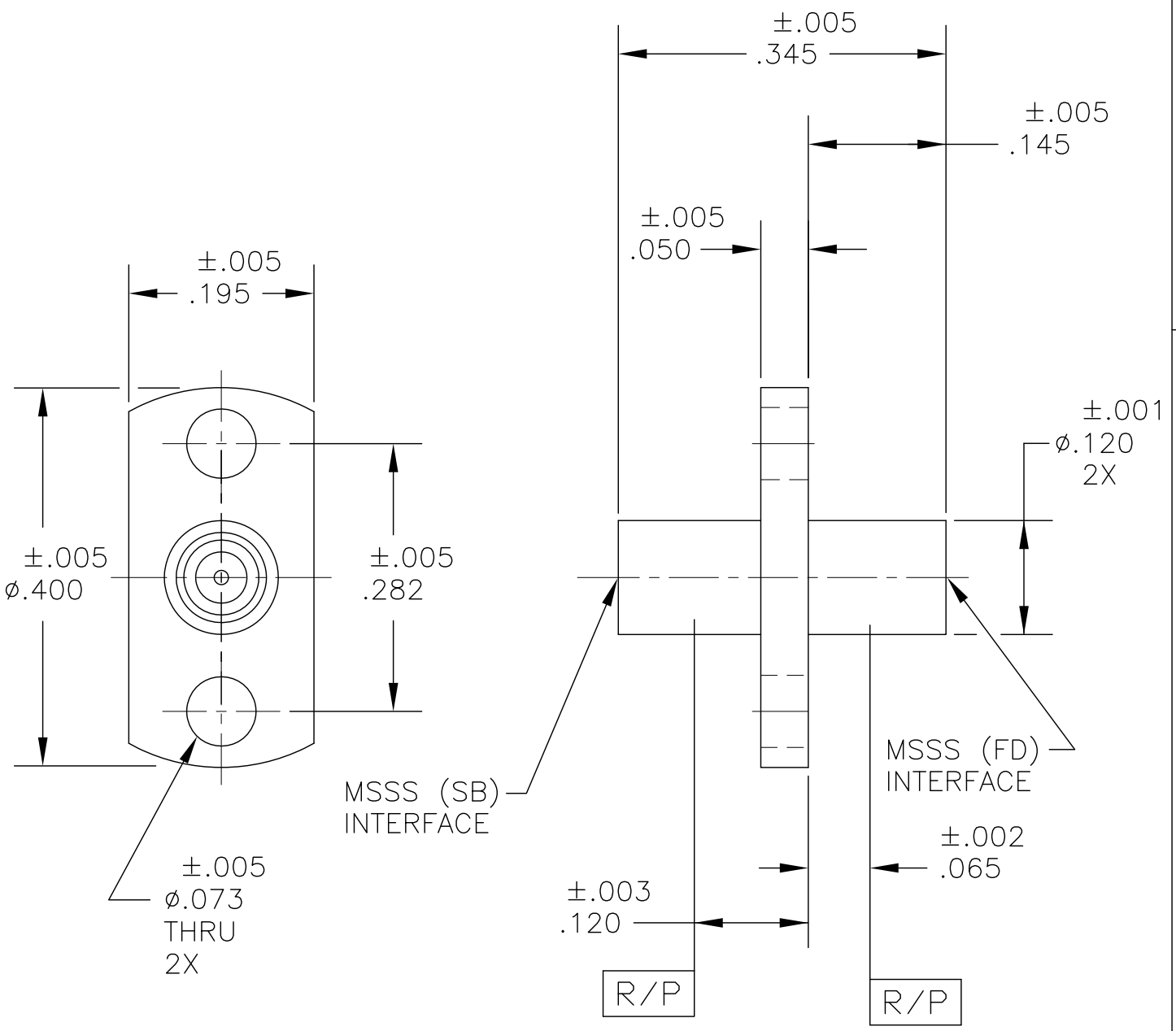


COMPONENT	MATERIAL AND FINISH	
BODY, BUSHING	303 CRES, ASTM A582	PASSIVATE, AMS-QQ-P-35
CONTACT	BeCu, ASTM B196, UNS C17300	GOLD PLATE, MIL-G-45204, TYPE 1, GRADE C, CLASS 1
INSULATORS	PTFE, ASTM D1710, TYPE I, GRADE 1, CLASS A	

PART NO. MSSS-4976

OUTLINE DRAWING



 <b>MICRO-MODE PRODUCTS, INC.</b> <i>The Reliable Connection to the Future</i>	El Cajon, CA 92020 ph 619.449.3844 www.micromode.com	CAGE CODE 15907
--	--	--------------------

ASSY PROCEDURES: INSERTION/EXTRACTION TOOL:	MSSS (M) SB TO MSSS (M) FD ADAPTER (2 HOLE FLANGE MOUNT)
--	---

SHEET 1 OF 1    OL4976 2-20-02    MP RF	PART NO. <b>MSSS-4976</b>	REVISION <b>A</b>
---	------------------------------	----------------------