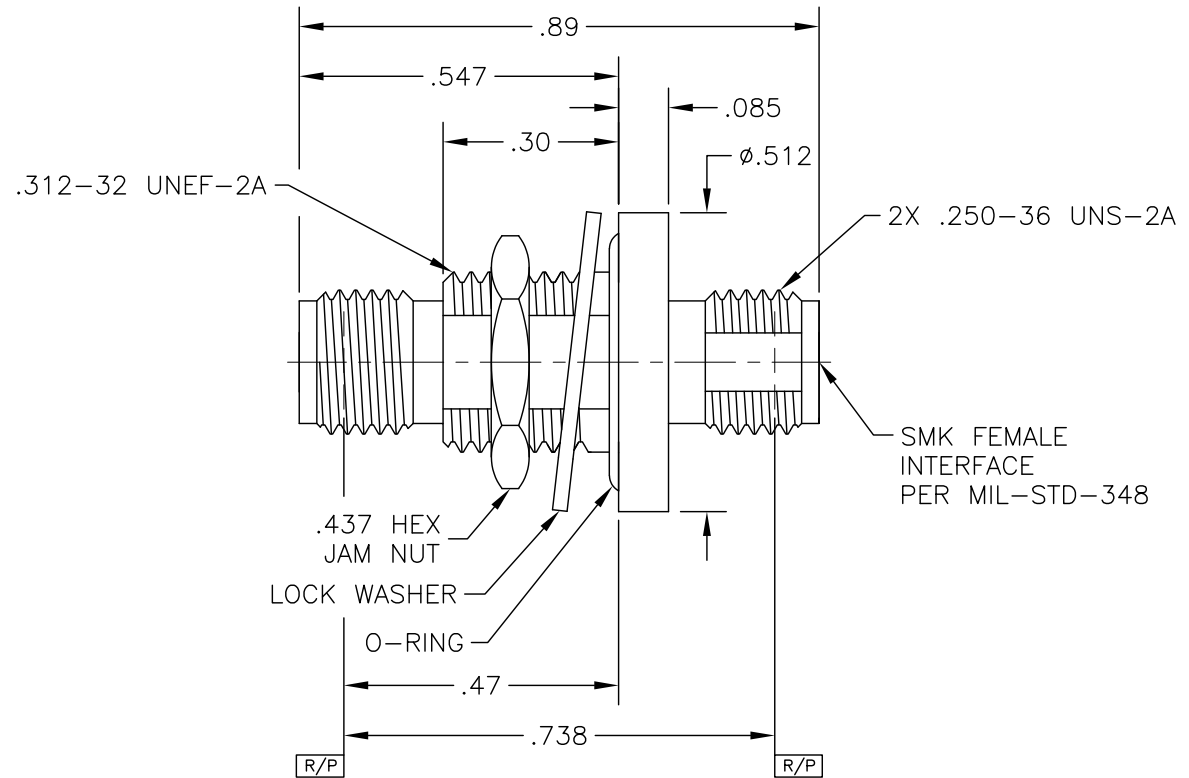
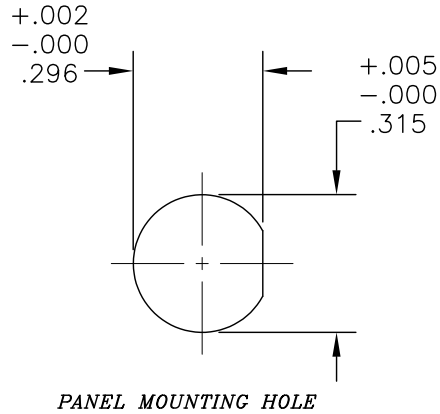


OUTLINE DRAWING



OPERATING FREQUENCY	DC TO 40 GHz
VSWR	1.25 DC TO 35 GHz
	1.35 35 TO 40 GHz
INSERTION LOSS	0.10 \sqrt{f} (GHz)
RF HIGH POT	670 Vrms MIN @ 5 MHz
INSULATION RESISTANCE	5,000 MEGOHMS MINIMUM

DWV	1,000 Vrms
CENTER/OUTER CONTACT RESISTANCE	6.0/15.0 mOHMS
IMPEDANCE	50 OHMS NOMINAL
OPERATING TEMPERATURE	-65°C TO +165°C
NON-OPERATING TEMPERATURE	-65°C TO +165°C
.	.

DURABILITY	500 CYCLES MINIMUM
HERMETICITY	1X10-8 CC/SEC He
VIBRATION	MIL-STD-202, METHOD 204, CONDITION D
SHOCK	MIL-STD-202, METHOD 213, CONDITION I
THERMAL SHOCK	MIL-STD-202, METHOD 107, CONDITION B

COMPONENT	MATERIAL & FINISH	
CONTACTS	BeCu, ASTM B196, UNS C17300	GOLD PLATE, MIL-G-45204, TYPE 1, GRADE C, CLASS 1
INSULATORS	PTFE, ASTM D1710, TYPE I, GRADE 1, CLASS A	
JAM NUT	303 CRES, ASTM A582	PASSIVATE, AMS-QQ-P-35
BODY, PIN	KOVAR, ASTM F15, MIL-1-23011, CLASS 1	GOLD PLATE, MIL-G-45204, TYPE 1, GRADE C, CLASS 1
GLASS	CORNING #7070 OR EQUIVALENT	
O-RING	SILICONE RUBBER	
LOCK WASHER	400 SERIES CRES	PASSIVATE, AMS-QQ-P-35



MICRO-MODE PRODUCTS, INC.
The Reliable Connection to the Future

El Cajon, CA 92020
 ph 619.449.3844
 www.micromode.com

CAGE CODE
 15907

ASSY PROCEDURES: N/A
INSERTION/EXTRACTION TOOL: N/A
SHEET 1 OF 1

SMK FEMALE TO SMK FEMALE BULKHEAD MOUNT, HERMETIC
PART NO. MSMK-10992
REVISION B

OUTLINE DRAWING