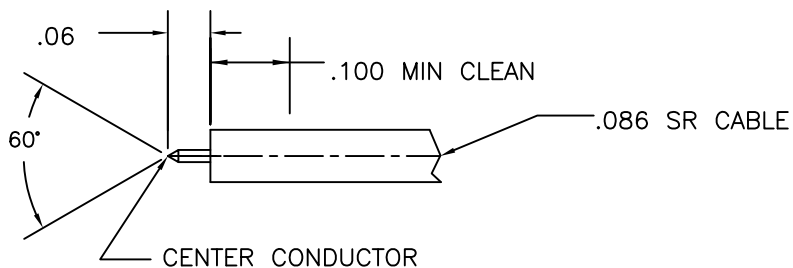
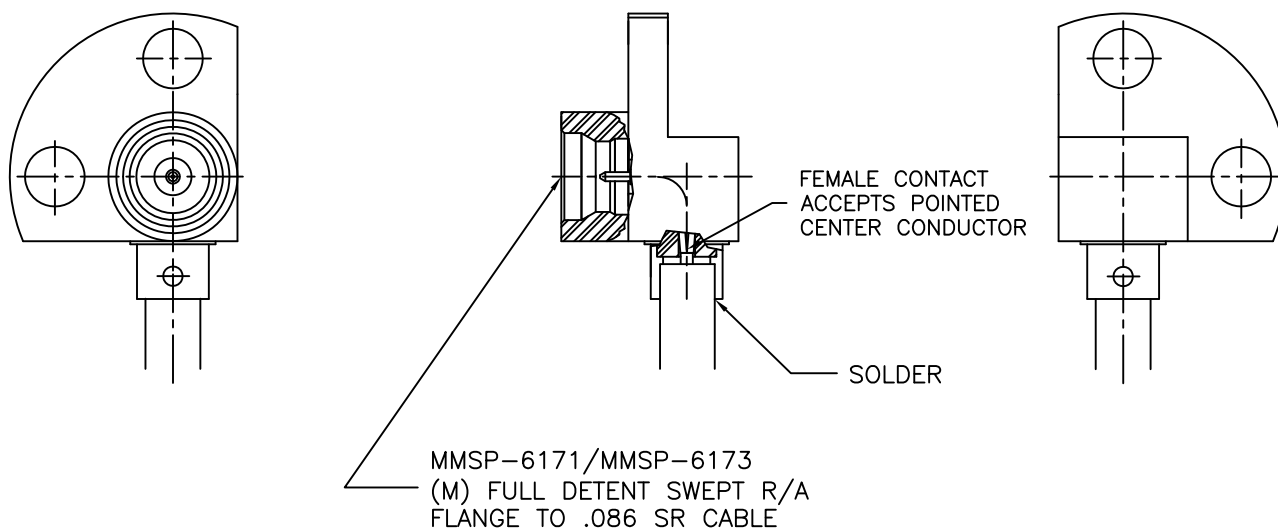


CABLE SERVICE AND ASSEMBLY PROCEDURES:

1. TRIM CABLE OUTER CONDUCTOR AND DIELECTRIC TO DIMENSION SHOWN, DO NOT NICK CENTER CONDUCTOR, POINT CENTER CONDUCTOR AS SHOWN.
2. CLEAN CABLE OUTER CONDUCTOR USING FINE GRAIN SANDPAPER OR STEEL WOOL AS SHOWN.



3. CAREFULLY INSERT POINTED CABLE INTO THE CONNECTOR (FEMALE CONTACT).
4. APPLY GENTLE PRESSURE AND SOLDER CONNECTOR TO CABLE; SOLDERING TEMPERATURE MUST NOT EXCEED 550°F. CLEAN SOLDER JOINT OF EXCESS SOLDER AND FLUX.



MICRO-MODE PRODUCTS, INC.
The Reliable Connection to the Future

El Cajon, CA 92020 Peoria, AZ 85345
(619) 449-3844 (602) 334-8944

CAGE CODE
15907

REF: MMSP-6171 AND MMSP-6173

DEFAULT TOLERANCES:
.XXX ± .005
.XX ± .01

CABLE SERVICE & ASSEMBLY PROCEDURES FOR
MMSP-6171 AND MMSP-6173 (M) FULL DETENT
SWEPT R/A FLANGE TO .086 SR CABLE

PART NO.

MMAP-6187

REVISION

—

SHEET 1 OF 1 M6187 12-22-98 PC