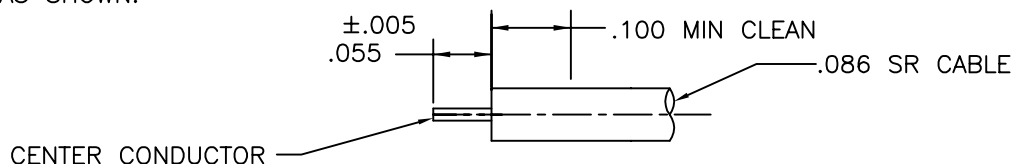
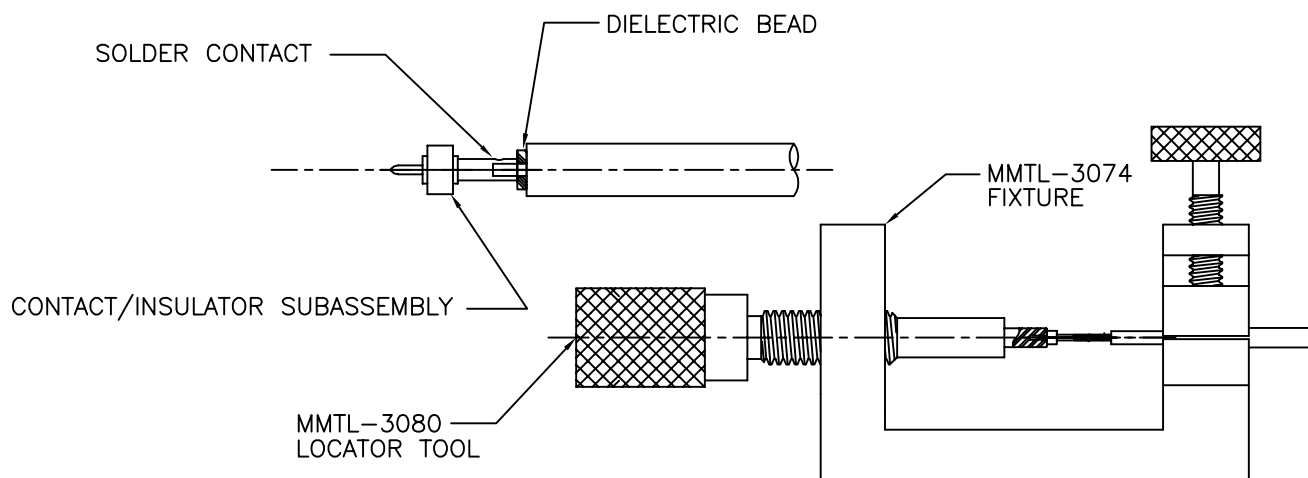


## CABLE SERVICE AND ASSEMBLY PROCEDURES:

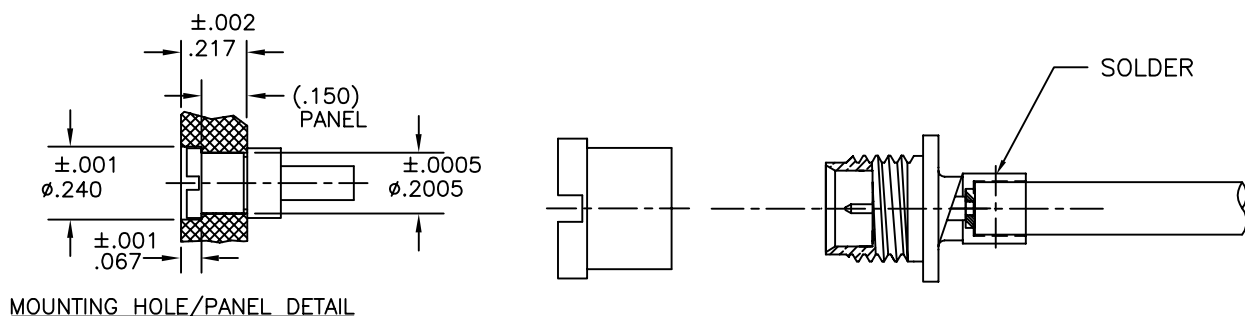
1. TRIM CABLE OUTER CONDUCTOR AND DIELECTRIC TO DIMENSION SHOWN;  
DO NOT NICK CENTER CONDUCTOR.
2. CLEAN CABLE OUTER CONDUCTOR USING FINE GRAIN SANDPAPER OR  
STEEL WOOL AS SHOWN.



3. PRE-TIN CENTER CONDUCTOR OF CABLE USING A SOLDER POT OR EQUIVALENT METHOD.
4. PLACE DIELECTRIC BEAD ON CABLE INNER CONDUCTOR.
5. PLACE CONTACT/INSULATOR SUBASSEMBLY ON CENTER CONDUCTOR AND SEAT AGAINST DIELECTRIC BEAD.
6. SOLDER CONTACT SUBASSEMBLY IN PLACE. (WARNING: SOLDERING TEMPERATURE MUST NOT EXCEED 550°F.)
7. CLEAN SOLDER JOINT OF EXCESS SOLDER AND FLUX.



8. CAREFULLY INSERT CONTACT/CABLE SUB-ASSEMBLY INTO CONNECTOR SUB-ASSEMBLY.  
NOTE: CONTACT MUST BE FLUSH TO BELOW REFERENCE PLANE OF MMSP HOUSING.
9. APPLY GENTLE PRESSURE AND SOLDER CONNECTOR TO CABLE; SOLDERING TEMPERATURE  
MUST NOT EXCEED 550°F. CLEAN SOLDER JOINT OF EXCESS SOLDER AND FLUX.



MICRO-MODE PRODUCTS, INC.  
*The Reliable Connection to the Future*

El Cajon, CA 92020  
ph 619.449.3844  
www.micromode.com

CAGE CODE  
15907

REF: MMSP-5759			CABLE SERVICE & ASSEMBLY PROCEDURES FOR MMSP-5759 (SBCM) MALE BULKHEAD MOUNT TO .086 SR CABLE		
DEFAULT TOLERANCES: <div>.XXX ± .005 .XX ± .01</div>					
SHEET 1 OF 1			PART NO. MMAP-5834		REVISION —
OL5834 2-19-03 MT					